



FIBERGLASS LIFT STATIONS & VALUE VAULTS

Water & Wastewater

MUNICIPAL | INDUSTRIAL | COMMERCIAL



Fiberglass Tank SOLUTIONS

"BUILT FOR THE LIFE OF THE SYSTEM"

Fiberglass Tank Solutions builds engineered, large diameter fiberglass wet well packages. Starting with the finite element analysis engineering report, these large diameter wet wells are built to withstand the rigors of underground conditions. Fully flooded to finish grade empty, structural bottoms to offset deflection, and pump mounts for pumps up to 200 Hp are just a few of the many design elements our wet wells can meet and exceed. These wet well packages are custom, structural, and prepackaged to provide lower construction cost, longer life cycles, and a corrosive resistant solution.

- 4'-14' Diameters Available
- Structural Calculations including finite element calculations for sidewall, bottom, and top load conditions.
- Buoyancy Calculations are also inclusive for any wet well design, based on confirmed field conditions or assumptions of flooded conditions to finish grade, without the use of added field concrete for structural support of the bottom.
- Full Submittal Package including detailed and scaled drawings of the fiberglass tanks and all components.
- Custom prepackaging and kit-up for a complete system off the truck and into the hole, eliminating field piping and dangerous confined space labor.

LIFT STATION PACKAGES

- Sewage
- Storm Water
- Potable Drinking Water
- Waste Water Treatment Plants

MARKETS

- MUNICIPAL
- INDUSTRIAL
- COMMERCIAL
- STORM WATER
- FOOD PROCESSING
- ENERGY

KIT UP & FABRICATION SERVICES

Fiberglass Tank Solutions is a systems integrator and a packaged solution provider. Each wet well is custom, requiring different piping systems, access covers, inlet connections, rails, and other specifically detailed components to match and mate to a customer's supplied pump and control system. We are able to provide a full arrangement of options for kit up in these systems due to our thorough understanding of components and how they relate to one another in the finished system. These systems can include, the following;

- Access Covers with Safety Grates
- SS Rails & SS Trim
- Fusion Bonded HDPE Piping Systems
- Epoxy Coated Ductile Iron Piping Systems
- SS Pipe Packages Sch. 10, 40, or 80, 304, or 316
- 100% Watertight Inlet Hubs
- Plug, Gate, Checks, Gauges, A/R Valves
- Emergency Pump Out Connections
- Stilling Wells
- Drop Inlet Structures
- High Temp up to 180°F
- PH 3-12
- H-20 Load Rating
- Double Wall

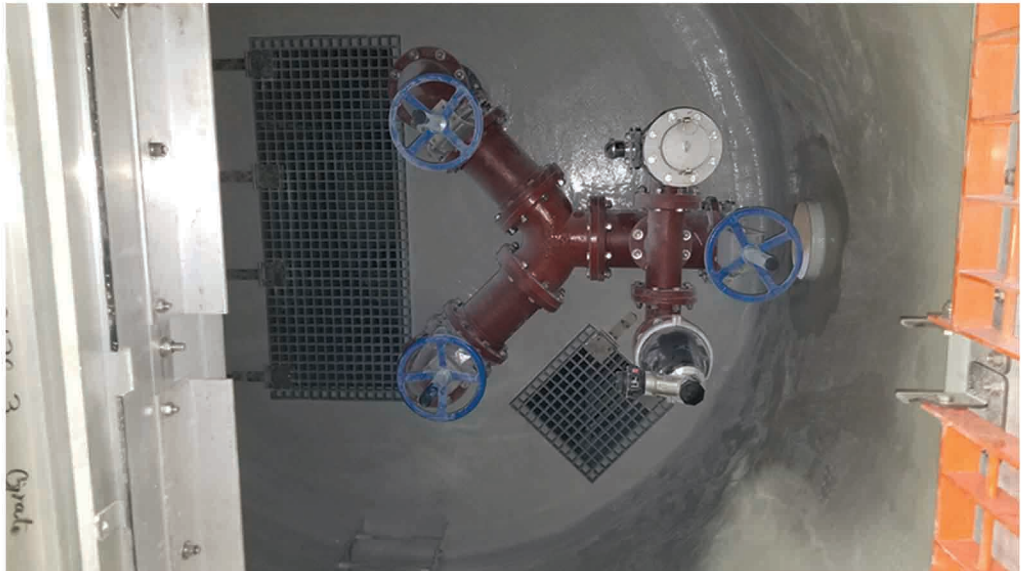


APPLICATIONS

- COLLECTION SYSTEMS
- WWTP HEADWORKS
- LEACHATE COLLECTION
- FOOD PROCESS CIP
- OFF-PEAK PUMPING

VALVE VAULT | DRY PIT PACKAGES

STAINLESS - DUCTILE - PVC - HDPE



OTHER PRODUCTS WE BUILD

- Above Ground Tanks
- Under Ground Storage Tanks
- OEM Manufacturing

