

FIRE WATER STORAGE W/ VERTICAL PUMP VAULT (H-20 LOAD RATED)

NOTE: * CUSTOMER SUPPLIED ITEM

BILL OF MATERIALS

ITEM	DESCRIPTION	ITEM	DESCRIPTION
A	Ø30" MANWAY W/ STEEL COVER	I	8" FLANGE NOZZLE W/ FULL BOT. DRAIN REINFORCEMENT
B	Ø30" MANWAY EXTENSION W/ GASKET & HARDWARE	J	ANTI-VORTEX PLATE
C	Ø42" H-20 RATED STEEL MANHOLE RING & COVER	K	8" FLANGE X FLANGE FLEXIBLE CONNECTOR
D	Ø16" H-20 RATED STEEL MANHOLE RING & COVER	L*	6" VERTICAL PUMP SHAFT HOUSING W/ BOWL & STRAINER
E	4" HALF COUPLING, NPT	M*	VERTICAL SUCTION PUMP W/ MOUNTING PLATE
F*	4" VENT LINE	N*	DISCHARGE VALVE & PIPING
G	4" FILL ASSEMBLY W/ CAM-LOCK QUICK CONNECT	O	8" FLANGE NOZZLE
H	Ø42" VERTICAL PUMP VAULT W/ ANTI-FLOAT FLANGE	P	STEEL LIFTING LUGS



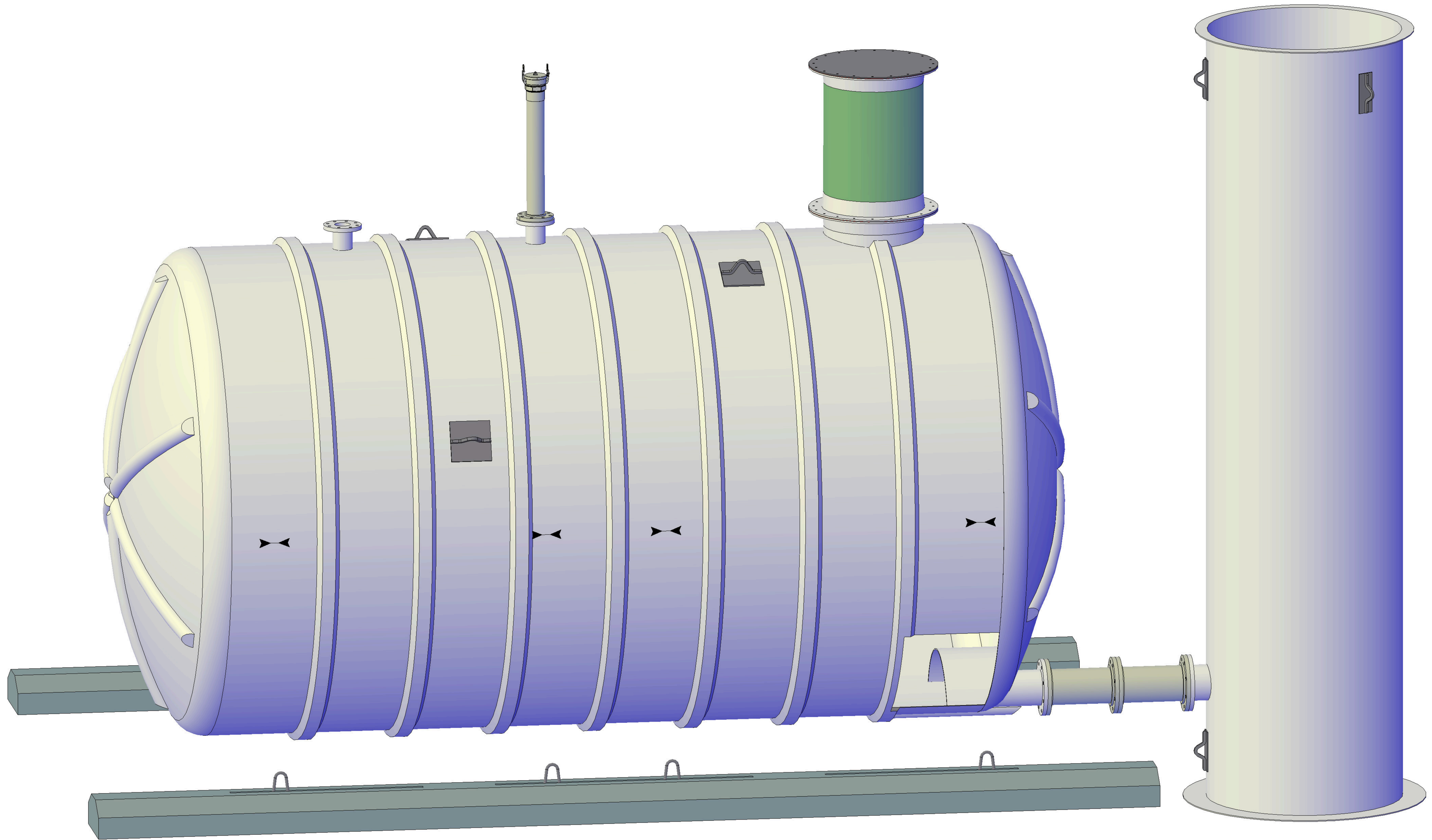
www.fgtsolutions.com

Phone: 573-317-9620

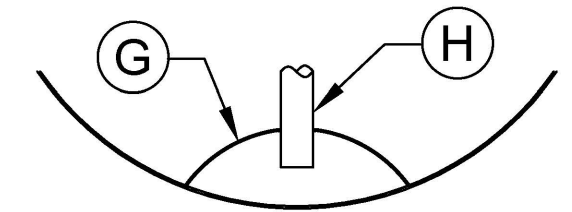
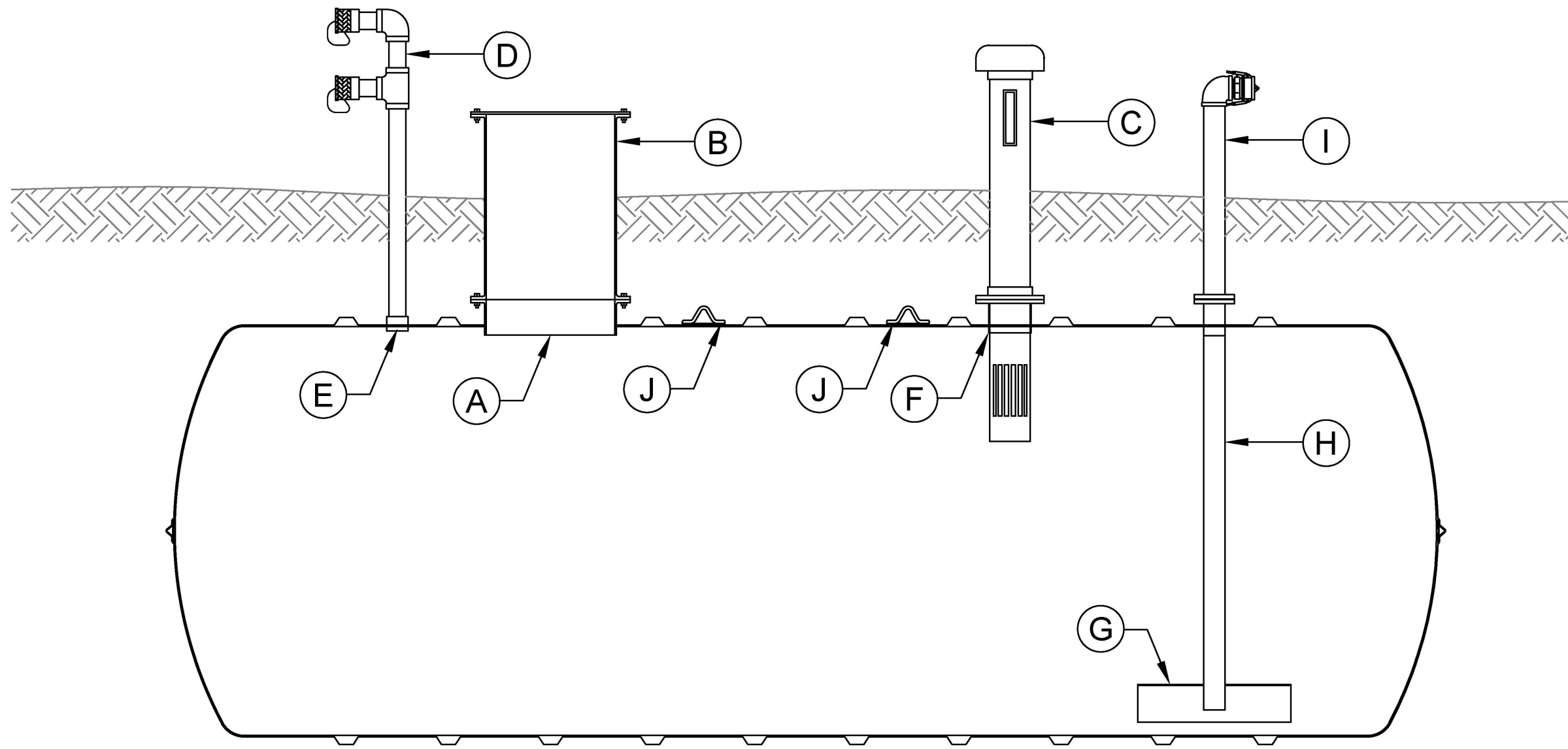
DRAWN BY: JACK

DATE: 5/17/2021

Mailing: P.O. BOX 326, Montreal, MO 65591
MFG: 147 Opportunity Rd.,
Camdenton, MO 65020



FIRE SUPPRESSION TANK AND VERTICAL TURBINE PUMP VAULT



ANTI-VORTEX
PLATE END VIEW

FIRE WATER STORAGE W/ HORIZONTAL DRAIN

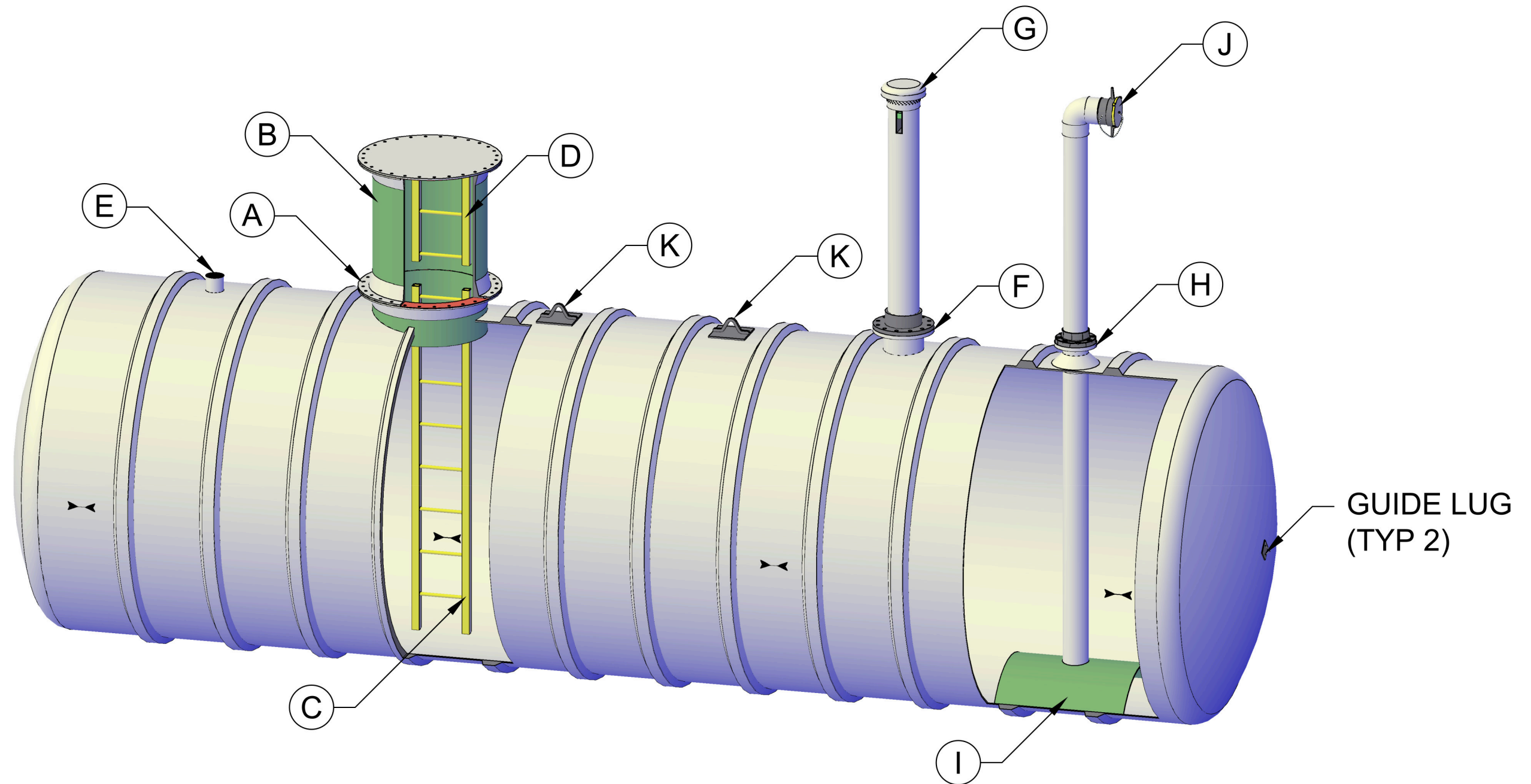
BILL OF MATERIALS

ITEM	DESCRIPTION	ITEM	DESCRIPTION
A	Ø30" MANWAY W/ STEEL COVER	F	10" FLANGE NOZZLE
B	Ø30" MANWAY EXTENSION W/ GASKET & HARDWARE	G	ANTI-VORTEX PLATE
C	8" PVC VENT/ LEVEL INDICATOR ASSEMBLY	H	4" FLANGE NOZZLE W/ FRP DROP PIPE
D	4" DUAL NST FILL OR RECIRCULATING POINTS	I	4" SUCTION LINE ASSEMBLY W/ CAM-LOCK QUICK CONNECT
E	4" HALF COUPLING, NPT	J	STEEL LIFTING LUGS



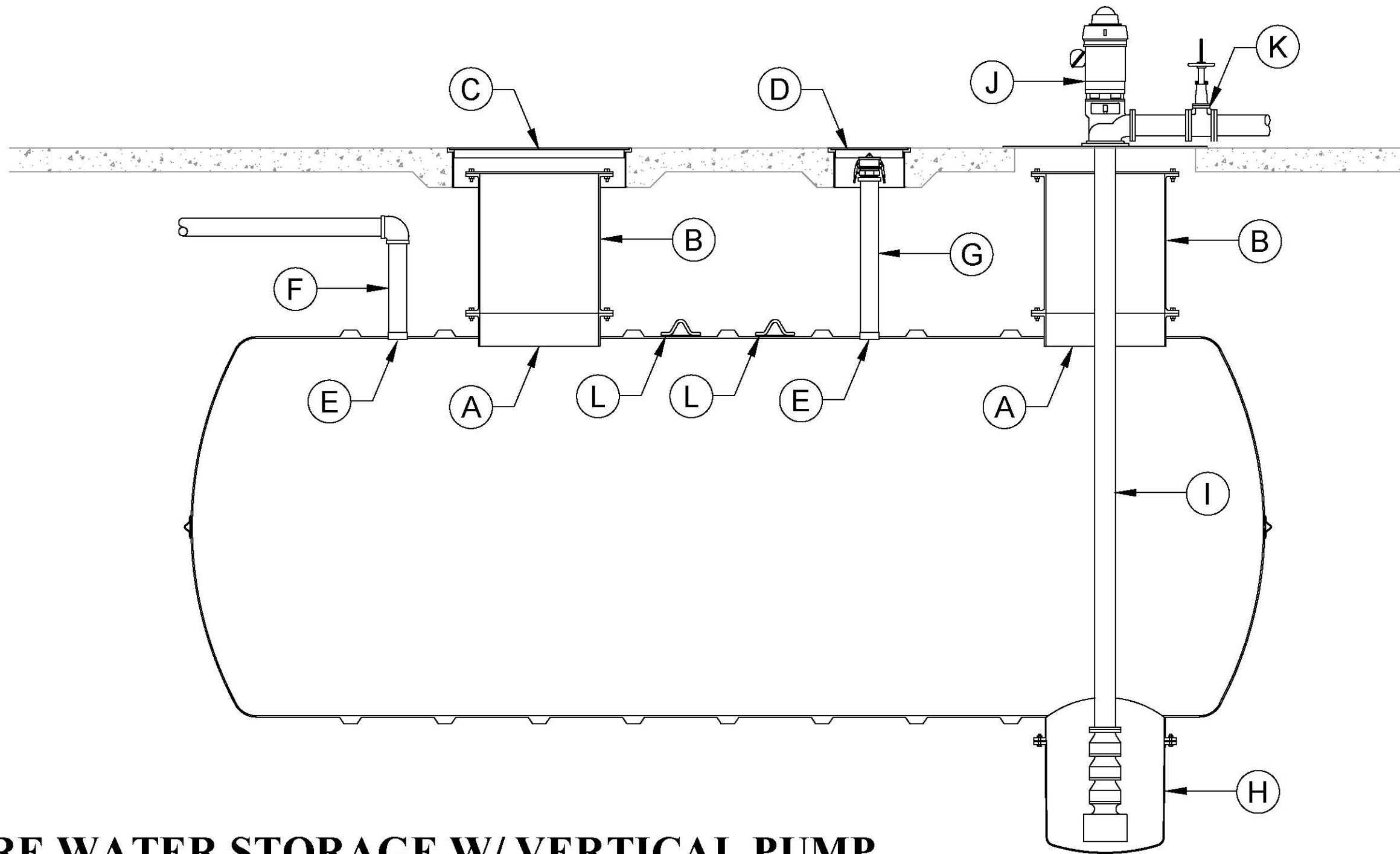
www.fgtsolutions.com
 Phone: 573-317-9620
 DRAWN BY: JACK
 DATE: 5/17/2021

Mailing: P.O. BOX 326, Montreal, MO 65591
 MFG: 147 Opportunity Rd.,
 Camdenton, MO 65020



BILL OF MATERIALS

ITEM	QTY	SIZE	ITEM DESCRIPTION	MATERIAL	ITEM	QTY	SIZE	ITEM DESCRIPTION	MATERIAL
A	1	30"	MANWAY W/ FIBERGLASS COVER	FRP	I	1		ANTI-VORTEX PLATE	Ø42" FRP
B	1	30"	MANWAY EXTENSION 36" TALL	FRP	J	1	6"	PUMP OUT ASSEMBLY W/ 5" FNST CONNECTION	PVC S40
C	1		16" WIDE LADDER FOR A Ø8' TANK	FRP	K	2		LIFTING LUG	STEEL
D	1		16" WIDE LADDER FOR A 36" TALL EXTENSION	FRP					
E	1	4"	FULL COUPLING, NPT (FILL CONNECTION)	FRP					
F	1	10"	FLANGE NOZZLE (VENT CONNECTION)	FRP					
G	1	8"	VENT & LEVEL INDICATOR ASSEMBLY	PVC					
H	1	6"	FLANGE W/ GUSSETS & FRP DROP PIPE	FRP					



FIRE WATER STORAGE W/ VERTICAL PUMP & BOTTOM SUMP (H-20 LOAD RATED)

NOTE: * CUSTOMER SUPPLIED ITEM

BILL OF MATERIALS

ITEM	DESCRIPTION	ITEM	DESCRIPTION
A	Ø30" MANWAY W/ STEEL COVER	G	4" FILL ASSEMBLY W/ CAM-LOCK QUICK CONNECT
B	Ø30" MANWAY EXTENSION W/ GASKET & HARDWARE	H	Ø30" FLANGED BOTTOM SUMP
C	Ø42" H-20 RATED STEEL MANHOLE RING & COVER	I*	6" VERTICAL PUMP SHAFT HOUSING W/ BOWL & STRAINER
D	Ø16" H-20 RATED STEEL MANHOLE RING & COVER	J*	VERTICAL SUCTION PUMP W/ MOUNTING PLATE
E	4" HALF COUPLING, NPT	K*	DISCHARGE VALVE & PIPING
F	4" VENT LINE	L	STEEL LIFTING LUGS

 **Fiberglass Tank**
SOLUTIONS

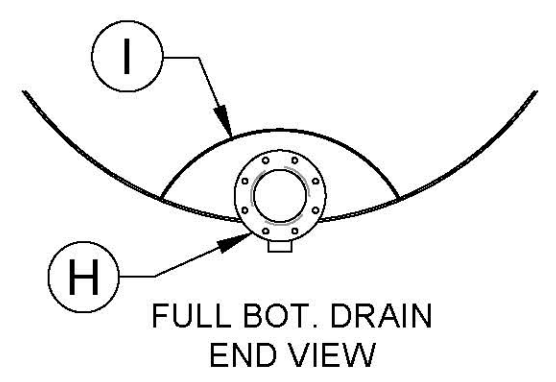
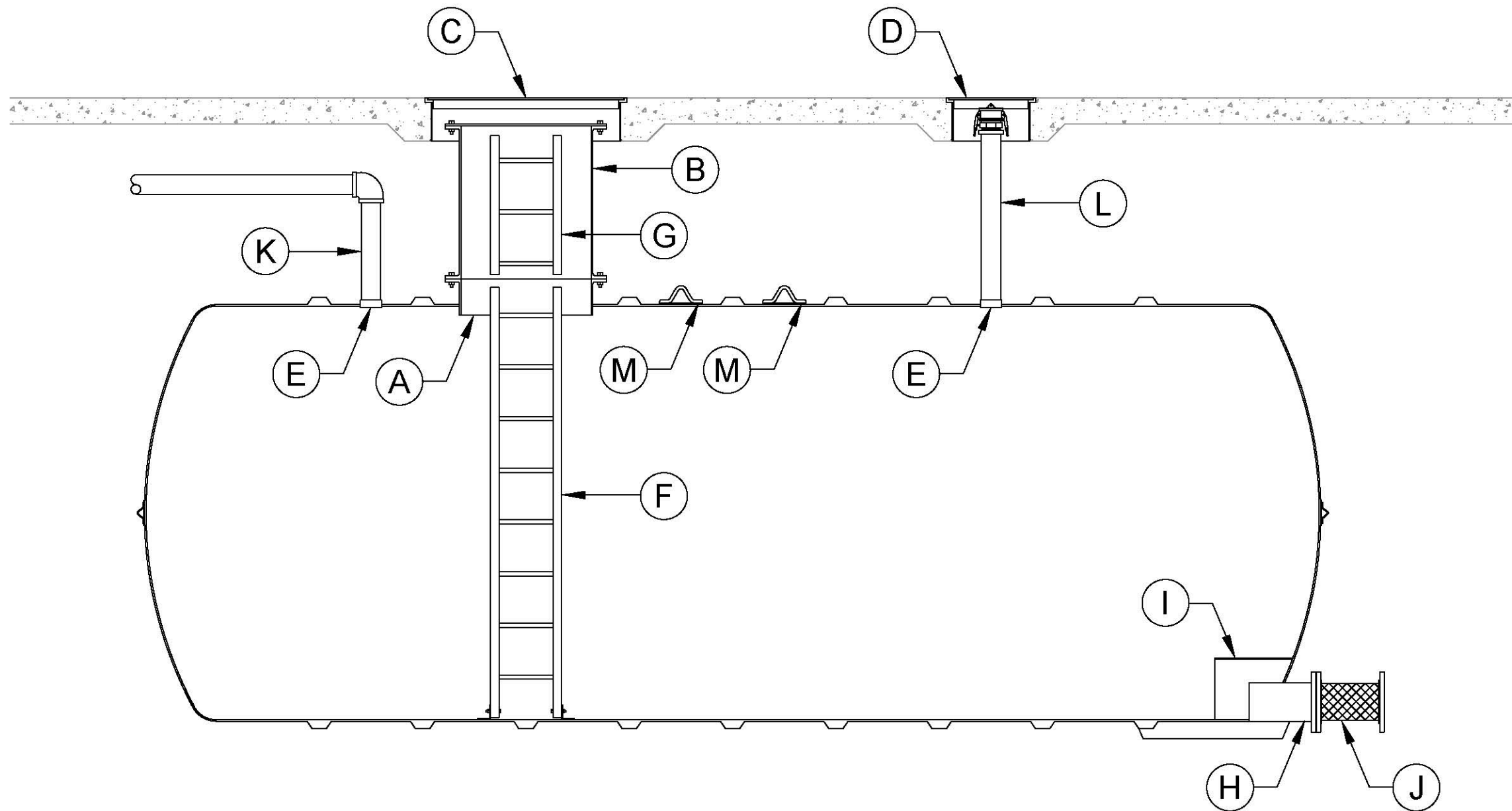
www.fgtsolutions.com

Phone: 573-317-9620

DRAWN BY: JACK

DATE: 5/17/2021

Mailing: P.O. BOX 326, Montreal, MO 65591
MFG: 147 Opportunity Rd.,
Camdenton, MO 65020



FIRE WATER STORAGE W/ FULL BOTTOM DRAIN (H-20 LOAD RATED)

BILL OF MATERIALS

ITEM	DESCRIPTION	ITEM	DESCRIPTION
A	Ø30" MANWAY W/ STEEL COVER	H	8" FLANGE NOZZLE W/ FULL BOT. DRAIN REINFORCEMENT
B	Ø30" MANWAY EXTENSION W/ GASKET & HARDWARE	I	ANTI-VORTEX PLATE
C	Ø42" H-20 RATED STEEL MANHOLE RING & COVER	J	8" FLANGE X FLANGE FLEXIBLE CONNECTOR
D	Ø16" H-20 RATED STEEL MANHOLE RING & COVER	K	4" VENT LINE
E	4" HALF COUPLING, NPT	L	4" FILL ASSEMBLY W/ CAM-LOCK QUICK CONNECT
F	16" WIDE FIBERGLASS LADDER	M	STEEL LIFTING LUGS
G	16" WIDE FIBERGLASS LADDER EXTENSION		



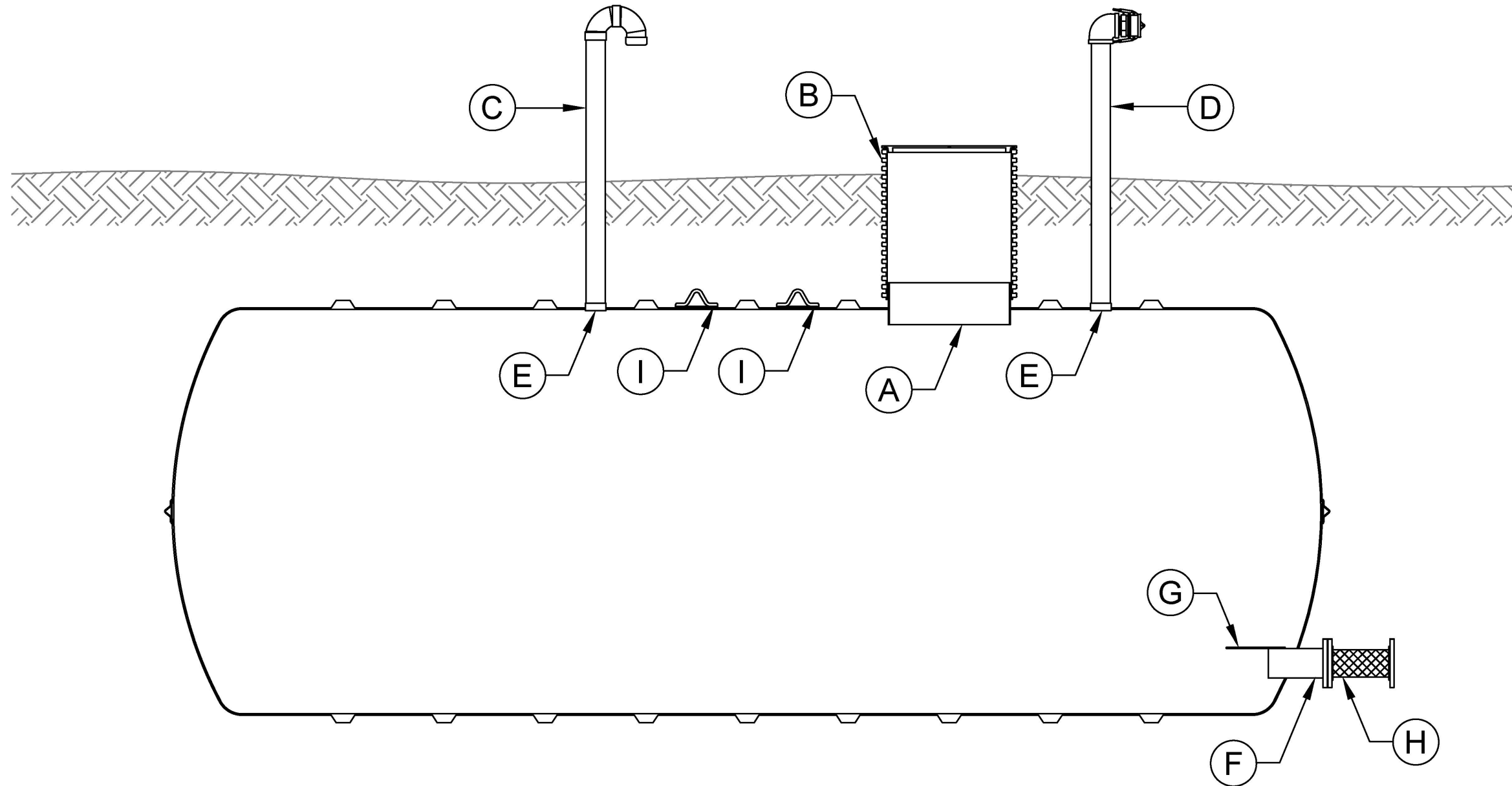
www.fgtsolutions.com

Phone: 573-317-9620

DRAWN BY: JACK

DATE: 5/17/2021

Mailing: P.O. BOX 326, Montreal, MO 65591
MFG: 147 Opportunity Rd.,
Camdenton, MO 65020



FIRE WATER STORAGE W/ HORIZONTAL DRAIN

BILL OF MATERIALS

ITEM	DESCRIPTION	ITEM	DESCRIPTION
A	Ø30" ACCESS OPENING	F	8" FLANGE NOZZLE
B	Ø30" PVC RISER PIPE W/ BOLT ON LID	G	ANTI-VORTEX PLATE
C	4" PVC GOOSNECK VENT ASSEMBLY W/ BUG SCREEN	H	8" FLANGE X FLANGE FLEXIBLE CONNECTOR
D	4" FILL ASSEMBLY W/ CAM-LOCK QUICK CONNECT	I	STEEL LIFTING LUGS
E	4" HALF COUPLING, NPT		



www.fgtsolutions.com

Phone: 573-317-9620

DRAWN BY: JACK

DATE: 5/17/2021

Mailing: P.O. BOX 326, Montreal, MO 65591

MFG: 147 Opportunity Rd.,

Camdenton, MO 65020

