

# Fiberglass Tank Solutions (FTS) Underground Storage Tanks (USTs) Request For Quote (RFQ) Form



Completed forms can be sent to Jack Crow at [jack@fgtsolutions.com](mailto:jack@fgtsolutions.com)

## Important Notes

- If engineered plans or specs are available, then they **MUST** be submitted with this form to receive a quote.  
If no plans or specs are available, then a minimum of a hand sketch drawing is required
- Inquiries for a budgetary quote, will only receive a general Budget Quote List
- Blank shell drawings, accessory cut sheets, typical application drawings, etc... can be downloaded from our resource library at <https://fgtsolutions.com/drawings/>

## Contact Information

Today's Date:  
Name:  
Company:  
Phone Number:  
Email:  
Company Type:    Engineer            (Gen/Sub) Contractor  
                         Wholesale            Project Owner

## Project Information

**Do you have Specs or Plans?    Yes OR    No**  
Request Type:      Budget      Bid      Buy  
Project Name:  
Ship to Location:  
When is the Tank Needed?

## Tank Application and Storage Purposes

Market:    Water      Wastewater      Oil/Gas

Fire Suppression  
 Rainwater Harvesting  
 Hazardous Liquid Containment (AFFF & CIP) \*  
 On-Site Water/Wastewater  
 Municipal Wastewater  
 Industrial Wastewater \*  
 Capture Tank \*  
 Grease/Sand/Oil Interceptor  
 Pipeline Sump Tanks \*  
 Urea Diesel Exhaust Fluid (DEF)  
 Oil Water Separator (OWS)  
Potable Water Storage  
Other:

\* = Additional Information needed prior to submission for an accurate Quote Request

## Tank Shell Selection

Tank Diameter (in Feet)  
Tank Storage Capacity (in Gallons)  
Total Storage to  Flow line\* **OR**  Total Tank Capacity  
 Single-wall **OR**  Double-Wall Tank **OR**  Other  
\* = Additional Information needed prior to submission for an accurate Quote Request

## Anti-Floatation Systems

- Concrete Deadman System  
 Concrete Anchor Slab  
 TankAnchor®  
 Fiberglass Deadman System  
 Unknown

## Engineering & Finish Grade Requirements

Tank Bury Depth (in feet)

Surface Finish Type:  Concrete  Asphalt  Gravel  Soil/Grass  Other: \_\_\_\_\_

Will this tank be in an H-20 traffic-rated area?  Yes **OR**  No

Will you need extra Documents?  Buoyancy Calc. with  P.E. Stamp |  Structural Calc. with  P.E. Stamp

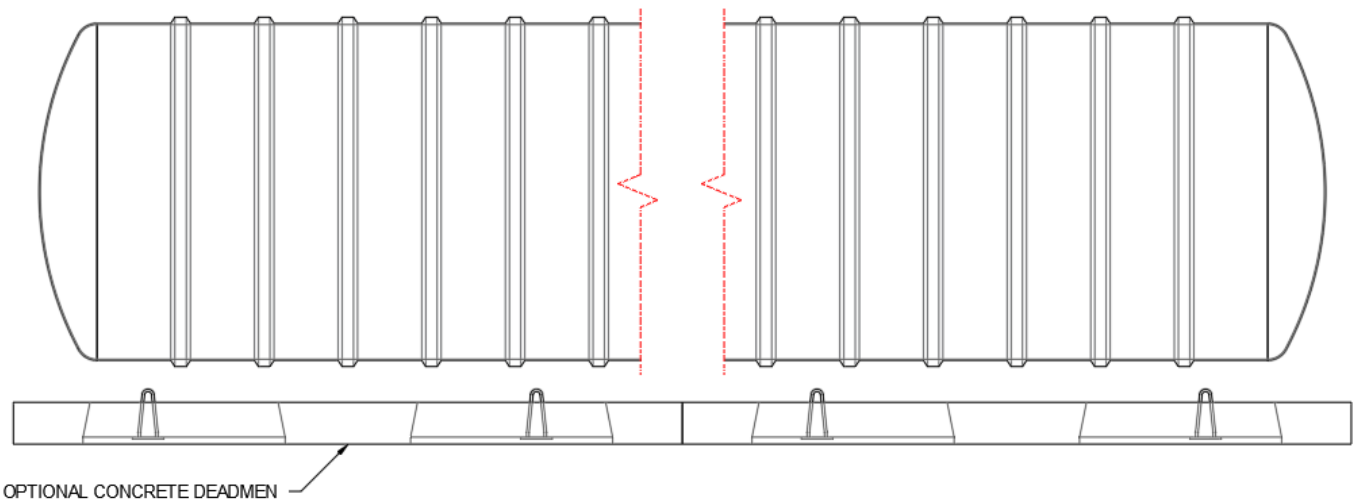
## Tank Drawing | Sketch | Plans and Specifications

**NOTE:** This step can be skipped if submitting a tank drawing or pages from project plans and specifications that contain a tank drawing with this RFQ form.

On the tank shell drawing below or on a separate blank tank shell drawing, please sketch and label all the fittings and accessories needed for this tank along with desired invert elevations (if applicable).

FTS blank shell drawings can be found at [www.fgtsolutions.com/drawings/](http://www.fgtsolutions.com/drawings/)

FINISH GRADE



## Tank Accessories and Fittings Quantities and Sizes

The next five pages of this RFQ form is a catalog showing the most common accessories and fittings offered by FTS. Please list the quantities required for this tank in the spaces provided beside each item below.

If you have any special provisions or need an item not listed in the catalog, please enter it below:

---

---

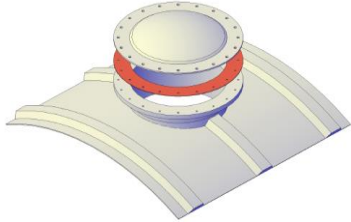
---

---

# Tank Accessories and Fittings

## Manways

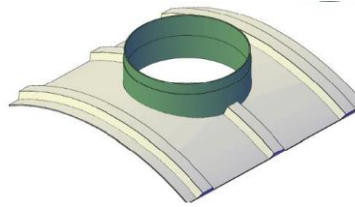
Manways are flanged with an ANSI 150 bolt pattern. Manways come with a blank (no fittings) cover, EPDM gasket, and stainless steel hardware.



Size	QTY
24" I.D.	
30" I.D.	
36" I.D.	

## Access Openings

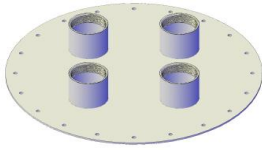
A one rib spacing is required between multiple access openings on a tank. Special considerations must be taken for customer supplied risers.



Size	QTY
24" Dia.	
30" Dia.	
36" Dia.	
42" Dia.	
48" Dia.	

## Manway Cover NPT Fittings

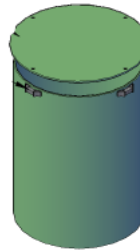
National Pipe Thread (NPT) fittings in manway cover.



Size	Half-Coupling	Full-Coupling
2"		
4"		
6"		
8"		

## Fiberglass Risers with Bolt on Lids

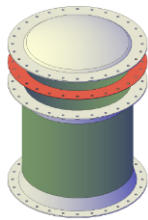
Fiberglass risers include a gasketed lid, self-tapping screws, bolt catches, and an adhesive bonding kit.



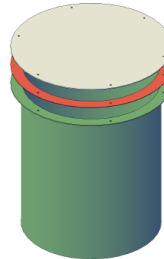
Size	24" I.D.	30" I.D.
2 ft Tall		
3 ft Tall		
4 ft Tall		
5 ft Tall		
6 ft Tall		

## Manway Extensions

Includes EPDM gasket and stainless steel hardware.



Size	24" I.D.	30" I.D.	36" I.D.
2 ft Tall			
3 ft Tall			
4 ft Tall			
5 ft Tall			
6 ft Tall			



Size	36" I.D.	42" I.D.	48" I.D.
2 ft Tall			
3 ft Tall			
4 ft Tall			
5 ft Tall			
6 ft Tall			

## Hinged and Lockable Manway Extensions

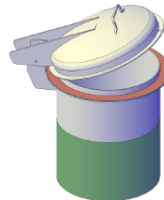
Includes EPDM gasket and has a mist gray gel-coat on the top 18" for UV protection. For use with Manways.



Size	24" I.D.	30" I.D.	36" I.D.
3 ft Tall			
4 ft Tall			
5 ft Tall			
6 ft Tall			

## Hinged and Lockable Fiberglass Risers

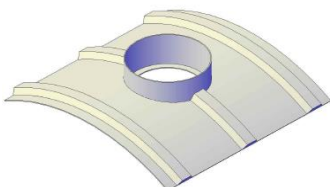
Includes EPDM gasket, adhesive bonding kit, and a mist gray gel-coat on the top 18" for UV protection. For use with access openings.



Size	24" I.D.	30" I.D.	36" I.D.
3 ft Tall			
4 ft Tall			
5 ft Tall			
6 ft Tall			

## Access Openings with Internal Flange

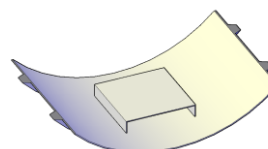
A one rib spacing is required between multiple access openings on a tank.



Size	QTY
24"	
30"	

## Pump Platforms

For pumps up to 300 lbs.

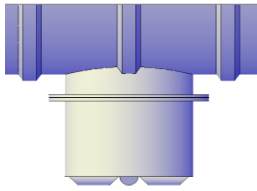


Size	QTY
24" x 24"	
24" x 36"	
30" x 30"	
36" x 36"	

# Tank Accessories and Fittings

## Flanged Bottom Sumps

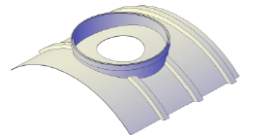
Bottoms sumps require field installation. Includes EPDM gasket and stainless steel hardware.



Size	QTY
30" I.D. x 14" Deep	
30" I.D. x 26" Deep	
30" I.D. x 36" Deep	
30" I.D. x 48" Deep	
48" I.D. x 48" Deep	

## Single-Wall Containment Collars

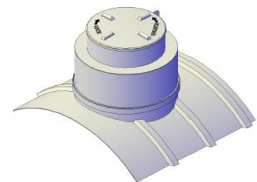
Containment collars can be ordered to surround fittings or a manway. May affect strap locations.



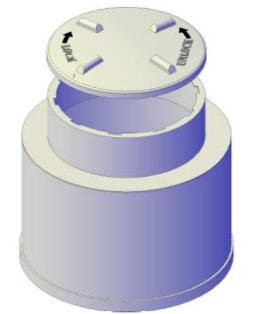
Size	QTY
42" Dia. x 6" Tall	
48" Dia. x 6" Tall	

## Single-Wall Containment Sumps

Containment collars are required for sumps. Includes the necessary adhesive bonding kit. All sump lids are watertight twist & lock style with an inflatable seal.



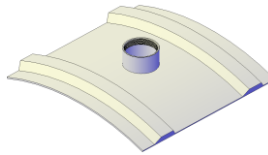
42" Diameter Sump		
Sump Height	30" Lid	36" Lid
36"		
42"		
48"		
54"		
60"		
66"		
72"		



48" Diameter Sump		
Sump Height	30" Lid	36" Lid
36"		
42"		
48"		
54"		
60"		
66"		
72"		

## Tank Mounted NPT Fittings

Female threaded couplings



Size	Half-Coupling	Full-Coupling
2"		
4"		
6"		
8"		

## Straight Pipe Stubs, PVC or FRP

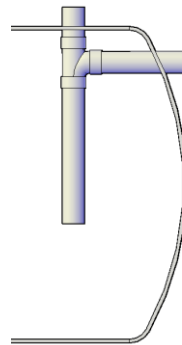
All potable water tank fittings must be FRP. All pipe stubs below 36" from top of tank must be FRP.



Size	PVC	FRP
2" Pipe		
3" Pipe		
4" Pipe		
6" Pipe		
8" Pipe		
10" Pipe		
12" Pipe		
16" Pipe	n/a	

## Inlet/Outlet Sanitary Tee, PVC

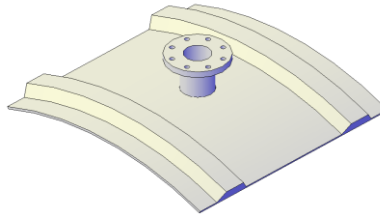
Pipe material will be PVC SCH40 for sizes 2"-6". For sizes 8"-12" material will be SDR 35.



Size	QTY
2" Pipe	
3" Pipe	
4" Pipe	
6" Pipe	
8" Pipe	
10" Pipe	
12" Pipe	

## FRP Flanged Fitting

All FRP flanges have ANSI bolt patterns.

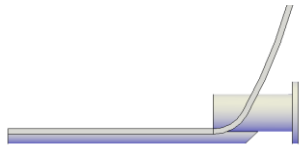


Size	QTY
2"	
3"	
4"	
6"	
8"	
10"	
12"	
14"	
16"	

# Tank Accessories and Fittings

## Full-Bottom Drain Reinforcement

For full-bottom flanges & pipe stubs.



QTY

## Anti-Vortex Plates

Multiple design options available.

QTY

## Sensor/Pipe Brackets

QTY

## Fiberglass Ladders

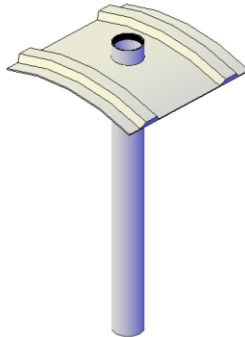
An additional ladder may be required inside the riser or manway extension.



Height	Std. Resin	NSF Resin
2 ft		
3 ft		
4 ft		
5 ft		
6 ft		
8 ft		
10 ft		
12 ft		

## Full-Couplings with Internal PVC or FRP Drop Pipe

Tank Must have a Manway or access opening.



Tank Dia./Pipe Material	Fitting Size		
	2"	4"	6"
4 ft PVC			
4 ft FRP			
5 ft PVC			
5 ft FRP			
6 ft PVC			
6 ft FRP			
8 ft PVC			
8 ft FRP			
10 ft PVC			
10 ft FRP			
12 ft PVC			
12 ft FRP			

## FRP Flange Nozzle with Internal FRP Vertical Drop Pipe

Tank Must have a manway or access opening.



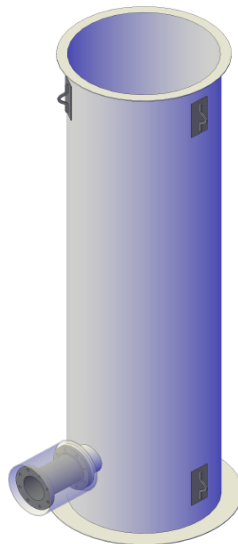
Tank Dia.	Flange Size				
	2"	4"	6"	8"	10"
4 ft					
5 ft					
6 ft					
8 ft					
10 ft					
12 ft					

## Striker Plates

Steel or aluminum plates laminated to the bottom of the tank under fittings and access openings.

Size	QUANTITY
Under 2"-12" Dia. Fittings	
Under 24" or 30" Dia. Manways	
Under 36" Dia. Manways	

## Pump Vaults

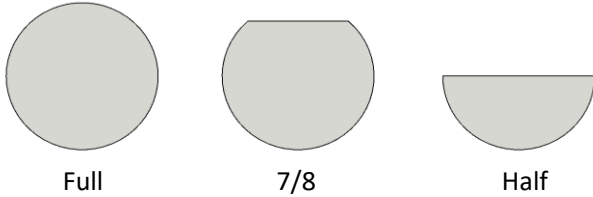


Depth	48" Diameter	
	Std. Resin	NSF Resin
8 ft		
9 ft		
10 ft		
11 ft		
12 ft		
13 ft		
14 ft		
15 ft		
16 ft		
17 ft		
18 ft		
19 ft		
20 ft		
21 ft		
22 ft		

# Tank Accessories and Fittings

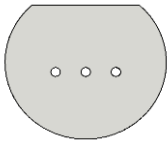
## Baffle Walls

Choose baffle diameter and height, if the the desired height is between the size/type shown below, use pricing for the larger baffle size.



Tank Dia.	Baffle Type		
	Full	7/8	Half
4 ft			
5 ft			
6 ft			
8 ft			
10 ft			
12 ft			

## Baffle Hole



Diameter	QTY
Any Diameter Up to 10 inches	

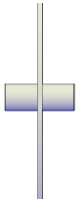
## Stainless Steel Banded Flexible Couplings

For use with pipe stubs. Per the FTS installation guide and tank warranty all pipe connections to the tank must be flexible.



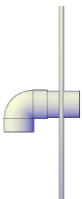
Size	QTY
2"	
3"	
4"	
6"	
8"	
10"	
12"	
16"	

## Straight-Pipe Baffle Crossover



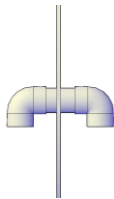
Diameter	QTY
4"	
6"	
8"	

## Single 90-Degree Baffle Crossover



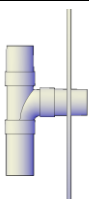
Diameter	QTY
4"	
6"	
8"	

## Double 90-Degree Baffle Crossover



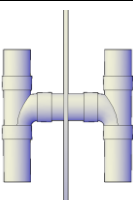
Diameter	QTY
4"	
6"	
8"	

## Single-Tee Baffle Crossover



Diameter	QTY
4"	
6"	
8"	

## Double-Tee Baffle Crossover



Diameter	QTY
4"	
6"	
8"	

## Stainless Steel Flanged Flexible Connectors

For use with flange nozzles. Per the FTS installation guide and tank warranty all pipe connections to the tank must be flexible. Includes two sets of EPDM gasket and stainless steel hardware.



Dia. and Length	QTY
2" x 12"	
3" x 14"	
4" x 11 3/4"	
6" x 14 1/8"	
8" x 15 3/8"	
10" x 17 3/4"	
12" x 18 3/8"	
14" x 20"	



## Tank Accessories and Fittings

### H-20 Load Rated Steel Manhole Ring & Covers



Diameter & Depth	QTY
8" x 12"	
12" x 12"	
18" x 10"	
24" x 10"	
30" x 10"	
36" x 10"	
38" x 10"	
42" x 10"	
48" x 10"	

### H-25 Load Rated Manhole Ring & Composite Covers

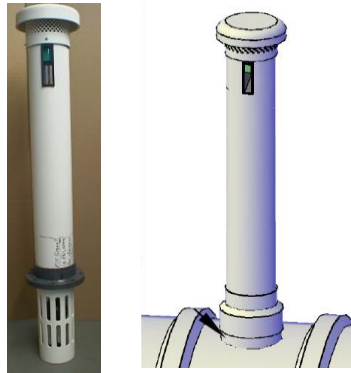


Diameter & Depth	QTY
39" x 11"	
44" x 11"	

### 8" PVC Vent & Level Indicator Assembly

Must include pricing for one of the fitting adapters. Bury depth is measured from top of tank to top of ground.

Level indicator window is normally 8"-10" above ground. Increase length for snow.



Bury Depth	QTY
2 ft	
3 ft	
4 ft	
5 ft	
6 ft	
7 ft	

Tank Fitting Adapter	QTY
10" Flange Adapter	
10" Pipe Stub Adapter	
8" NPT Coupling Adapter	

### PVC Dry Hydrant Assembly

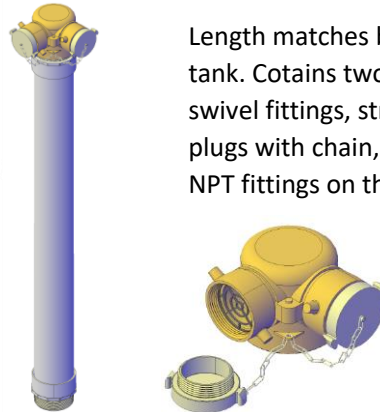
Dry hydrant heads are anodized aluminum female national hose (FNH) connections and available in either 4 1/2", 5", or 6" sizes. Includes dust cap. For use with 6" NPT couplings or 6" flanges.



Bury Depth	QTY
2 ft	
3 ft	
4 ft	
5 ft	
6 ft	
7 ft	

### Siamese Single Clapper Fill Assembly

Length matches bury depth of tank. Contains two (2) 2 1/2" FNH swivel fittings, strainer plates, plugs with chain, and a 4" male NPT fittings on the bottom.



QTY

### Installation of Customer Supplied Effluent Filters

Customer supplies filter and/or siphon, as well as, add a properly sized outlet straight pipe.



Install Type	QTY
Filter install, single	
Filter install, dual	
Filter install, quad	
Price per filter, when installed on a baffle/partion wall.	

Tank Diameter (Ft.)	Nominal Capacity (Gal.)	Actual Capacity (Gal.)	St. Wall Length (Ft./ In.)	Overall Length (Ft./ In.)	SW Shell Weight (LBS)	DW Shell Weight (LBS)	Strap Qty
4 Ft. (48" ID) (52" OD)	600	610	5'-8"	7'-2"	412	725	2
	1,000	1,010	9'-11"	11'-5"	528	957	2
	1,500	1,542	15'-7"	17'-1"	590	1,051	2
	2,000	2,075	21'-3"	22'-8"	847	1,504	4
	2,500	2,608	26'-11"	28'-4"	1,130	2,001	4
	3,000	3,007	31'-2"	32'-7"	1,387	2,455	4
	3,500	3,540	36'-10"	38'-3"	1,565	2,780	6
	4,000	4,073	42'-6"	43'-11"	1,822	3,234	6
5 Ft. (60" ID) (65" OD)	1,500	1,608	9'-11"	11'-8"	819	1,012	2
	2,000	2,024	12' - 9"	14'-6"	992	1,192	2
	2,500	2,648	17'-0"	18'-9"	1,274	1,484	2
	3,000	3,065	19'-10"	21'-7"	1,447	1,663	2
	3,500	3,689	24'-1"	25'-10"	1,784	2,031	4
	4,000	4,105	26'-11"	28'-8"	1,957	2,211	4
	4,500	4,521	29'-9"	31'-6"	2,130	2,391	4
	5,000	5,145	34'-0"	35'-9"	2,367	2,637	4
	5,500	5,562	36'-10"	38'-7"	2,540	2,817	6
	6,000	6,186	41'-1"	42'-10"	2,877	3,185	6
	6,500	6,602	43'-11"	45'-8"	3,050	3,365	6
	7,000	7,018	46'-9"	48'-6"	3,223	3,544	6
7,500	7,642	51'-0"	52'-9"	3,505	3,836	6	
8,000	8,059	53'-10"	55'-7"	3,678	4,016	8	
6 Ft. (72" ID) (77" OD)	1,500	1,759	7'-1"	9'-2"	807	1,060	2
	2,000	2,059	8'-6"	10'-7"	938	1,195	2
	2,500	2,588	11'-0"	13'-1"	981	1,209	2
	3,000	3,257	14'-2"	16'-3"	1,128	1,390	2
	4,000	4,156	18'-5"	20'-6"	1,354	1,623	2
	5,000	5,055	22'-8"	24'-9"	1,692	1,972	4
	6,000	6,253	28'-4"	30'-5"	2,096	2,411	4
	7,000	7,152	32'-7"	34'-8"	2,566	2,894	4
	8,000	8,051	36'-10"	38'-11"	2,850	3,188	6
	9,000	9,250	42'-6"	44'-7"	3,189	3,537	6
10,000	10,149	46'-9"	48'-10"	3,723	4,110	6	
8 Ft. (96" ID) (101" OD)	3,000	2,876	6'-0"	8'-9"	1,245	1,955	2
	4,000	4,380	10'-0"	12'-9"	1,678	2,620	2
	5,000	5,132	12'-0"	14'-9"	1,895	2,952	2
	6,000	5,884	14'-0"	16'-9"	2,112	3,284	2
	7,000	7,388	18'-0"	20'-9"	2,632	4,053	4
	8,000	8,140	20'-0"	22'-9"	2,849	4,385	4
	9,000	8,892	22'-0"	24'-9"	3,065	4,718	4



Tank Diameter (Ft.)	Nominal Capacity (Gal.)	Actual Capacity (Gal.)	St. Wall Length (Ft./ In.)	Overall Length (Ft./ In.)	SW Shell Weight (LBS)	DW Shell Weight (LBS)	Strap Qty
8 Ft. (96" ID) (101" OD)	10,000	10,396	26'-0"	28'-9"	3,499	5,383	4
	11,000	11,148	28'-0"	30'-9"	3,716	5,715	4
	12,000	11,900	30'-0"	32'-9"	3,932	6,047	4
	13,000	13,404	34'-0"	36'-9"	4,366	6,712	6
	14,000	14,156	36'-0"	38'-9"	4,583	7,044	6
	15,000	14,908	38'-0"	40'-9"	4,799	7,377	6
	16,000	16,412	42'-0"	44'-9"	5,320	8,146	6
	17,000	17,164	44'-0"	46'-9"	5,536	8,478	6
	18,000	17,917	46'-0"	48'-9"	5,753	8,810	8
	19,000	19,421	50'-0"	52'-9"	6,187	9,475	8
	20,000	20,173	52'-0"	54'-9"	6,403	9,807	8
22,000	22,429	58'-0"	60'-9"	7,126	10,096	8	
10 Ft. (120" ID) (125" OD)	7,000	7,087	10'-0"	14'-7"	2,672	4,586	4
	8,000	8,262	12'-0"	16'-7"	3,162	3,719	4
	9,000	9,437	14'-0"	18'-7"	3,487	4,066	4
	10,000	10,612	16'-0"	20'-7"	3,841	4,419	4
	11,000	11,787	18'-0"	22'-7"	4,194	5,423	4
	12,000	12,962	20'-0"	24'-7"	4,547	5,848	4
	13,000	12,962	20'-0"	24'-7"	4,547	5,848	4
	14,000	14,137	22'-0"	26'-7"	4,900	6,274	4
	15,000	15,312	24'-0"	28'-7"	5,254	6,699	4
	18,000	18,837	30'-0"	34'-7"	6,313	7,976	6
	20,000	20,012	32'-0"	36'-7"	6,667	8,402	6
	22,000	22,362	36'-0"	40'-7"	7,373	9,253	8
	25,000	25,887	42'-0"	46'-7"	8,541	10,659	8
	30,000	30,587	50'-0"	54'-7"	9,954	12,361	10
	35,000	35,288	58'-0"	62'-7"	11,368	14,063	12
40,000	39,988	66'-0"	70'-7"	12,889	15,896	14	
50,000	50,563	84'-0"	88'-7"	16,177	17,254	16	
12 Ft. (144" ID) (149" OD)	20,000	20,140	19'-6"	26'-1"	11,557	14,377	8
	25,000	25,216	25'-6"	32'-1"	14,233	17,574	8
	30,000	30,292	31'-6"	38'-1"	16,910	20,771	10
	35,000	35,368	37'-6"	44'-1"	19,586	23,881	12
	40,000	40,444	43'-6"	50'-1"	22,263	27,078	12
	45,000	45,521	49'-6"	56'-1"	24,939	30,274	14
	50,000	50,597	55'-6"	62'-1"	27,615	33,471	18
	55,000	55,673	61'-6"	68'-1"	30,292	36,630	20
60,000	60,749	67'-6"	74'-1"	32,968	39,808	20	