

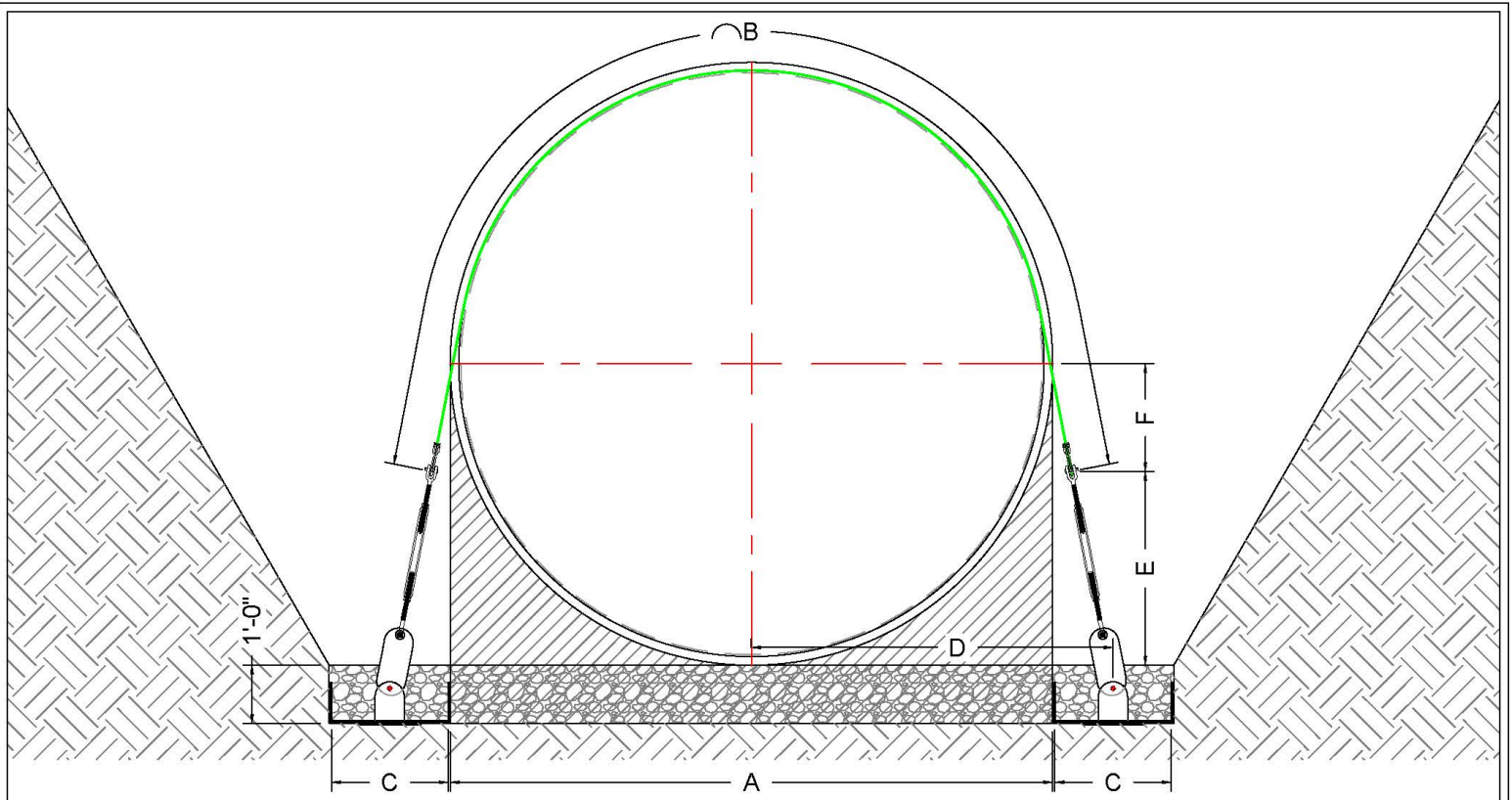


Fiberglass Tank SOLUTIONS



Engineered Fiberglass Deadman System

LIGHTWEIGHT - ENGINEERED STRENGTH



ANCHORING DIMENSIONS

TANK DIA.	"A"	"B"	"C"	"D"	"E"	"F"
4'	4'- 4"	85"	12"	2'-9"	1'- 10"	0'- 4"
5'	5'- 4"	112"	12"	3'-3"	2'- 1"	0'- 7"
6'	6'- 4"	145"	12"	3'- 9"	1'- 11"	1'- 3"
8'	8'- 4"	181"	18"	4'- 12"	3'- 1"	1'- 2"
10'	10'- 4"	236"	24"	6'- 4"	3'- 4"	1'- 10"
12'	12'- 4"	288"	24"	7'- 3"	3'- 9"	2'- 6"

- NO EXTRA FREIGHT COSTS
- LIGHTWEIGHT
- FLEXIBLE DESIGN

