

Lifting Slings Warnings

▲ WARNINGS:

- ▲ Always inspect the lifting slings for damage before use.
- ▲ Never use a damaged sling. No field repairs are available for damaged lifting slings - contact FTS immediately if damage is found.
- ▲ Ensure the lifting equipment is properly sized for the tank.
- ▲ Don't twist, knot, snag or tie slings together. Avoid jerking or swinging the load. Keep slings away from sharp edges.
- ▲ Follow all standard rigging procedures when connecting to the lifting slings.

FTS Lifting Sling Features

Safety Benefits:

- Ground-level hookup, no ladders, no men on tank, one man lift.

Setup:

- Two pre-fitted polyester web slings (Type 4, twisted eyes), rated for the tank weight, pre-positioned on "Lift Here" markings on the tank.



- No spreader bar needed.
- Attached slings directly to the hook on the lifting equipment.

Handling:

- Lift the tank off the truck in the position it was shipped in.
- If necessary, place the tank on ground, re-choke to rotate the tank vertically and set in the excavation.
- Slings are single-use and buried with the tank.

PROCEDURE FOR LIFTING FTS TANKS WITH SLINGS

- ▲ **WARNING** Non-compliance voids the warranty and risks injury, damage, or tank failure. Read all instructions, supplemental documents, visuals, and guidelines before installation.

1. General Information

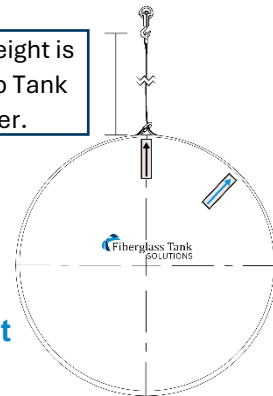
- ASME B30.9-rated polyester web lifting slings are supplied with the tank & designed for its weight.
- Follow all applicable safety regulations and industry best practices.
- Always secure tank before moving; never stand beneath or near a suspended tank.
- Tanks must be lifted and set only - never rolled, dragged, or dropped.
- Do not rotate the tank while lifting from the trailer.
- For additional installation requirements, consult the [FTS Installation Manual](#) or contact FTS Sales.

2. Lifting FTS Tanks with Slings

- Use the provided lifting slings - minimum two per tank:
 - Slings are placed by FTS on the flat areas between ribs at locations marked "LIFT HERE."
- Confirm slings are secure, balanced, and with a maximum of 60 degrees between the slings. FTS places the slings at locations that do not exceed 60 degrees.
- Do not rotate tank while suspended.

FTS Tank Dia	Sling Length	Sling Spec
8-ft	34'	3" 2-Ply
10-ft	42'	3" 4-Ply
12-ft	50'	6" 4-Ply

Sling Height is Equal to Tank Diameter.



Crane recommended to reach hook point height

Unloading Sequence:

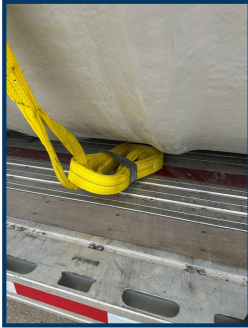
1. Confirm slings are in correct marked positions.
2. Release the sling ends attached to the trailer.
3. Lower crane hook, attach sling to hook.
4. Slowly lift to equalize sling tension.
5. Raise tank clear of trailer and set down temporarily or directly into the excavation (if the tank was not shipped rotated).
6. If needed, adjust the choke position using dome-end markings as a guide (arrows) for tank rotation and final setting.
7. When ready, lift and carefully set the tank into the excavation.
8. Secure tank, lower crane, unhook slings. Slings can be buried with the tank.
9. Repeat steps 1-9 for any additional tank(s).

Continue to Next Page for Visual Steps

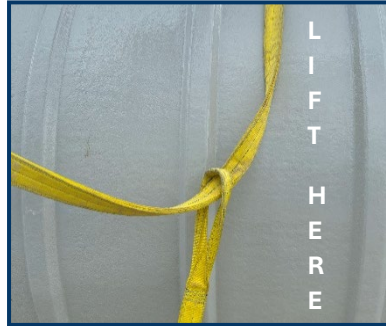
FTS Lifting Slings – Visual Steps

Instructions on how to Lift and Set Tank

First Steps:



Release the slings attached to the trailer deck.

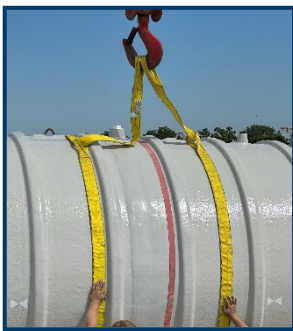


Ensure straps are in proper lifting location
(Example Only: marked "LIFT HERE" on tank flats)



Lower crane hook to the now loose ends of slings. Secure the loose ends to crane hook.

Second Steps:



Once secured, carefully position crane boom where slings loads are equal



Choke hitch must be pulled tight before the lift. NOT pulled down during the lift.

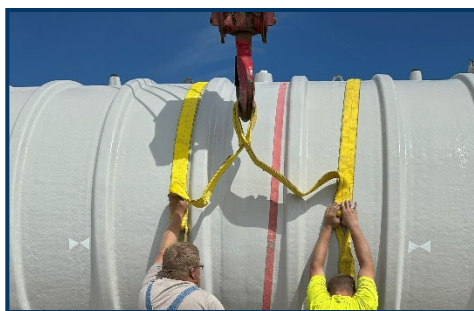


Slowly raise crane hook ensuring choke hitch is over centerline of tank

Third Steps:



Lift tank off trailer and set on smooth surface – free of obstructions, maintaining a maximum of 60 degrees between slings.



When Rotated: Reposition slings according to tank lift/set locations to rotate tank upright.



Lift tank into set location, lower crane to unhook & drop slings, then continue with the installation of the tank.

Please Note: Most 10' and 12' tanks arrive to the jobsite in the rotated position and need the optional process in the "Third Steps" section of this document. This allows for those rotated tanks to be set and re-picked with the same straps and slightly moving the choke position so that the tank can be lifted in the upright position in the excavation.